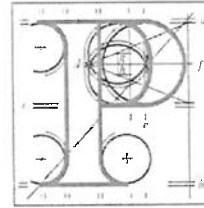


**Our Case Number:** ABP-317660-23



**An  
Bord  
Pleanála**

Capital Glass Company Limited  
c/o Therese Dowling  
61a/62 Lower Clanbrassil Street  
Dublin 8  
D08 X9E4

**Date:** 03 November 2023

**Re:** Busconnects Kimmage to city centre core bus corridor scheme  
Kimmage, Dublin

Dear Sir / Madam,

An Bord Pleanála has received your recent submission in relation to the above-mentioned proposed road development and will take it into consideration in its determination of the matter. Please accept this letter as a receipt for the fee of €50 that you have paid.

Please note that the proposed road development shall not be carried out unless the Board has approved it or approved it with modifications.

The Board has also received an application for confirmation of a compulsory purchase order which relates to this proposed road development. The Board has absolute discretion to hold an oral hearing in respect of any application before it, in accordance with section 218 of the Planning and Development Act 2000, as amended. Accordingly, the Board will inform you in due course on this matter. The Board shall also make a decision on both applications at the same time.

If you have any queries in relation to this matter please contact the undersigned officer of the Board at [laps@pleanala.ie](mailto:laps@pleanala.ie)

Please quote the above-mentioned An Bord Pleanála reference number in any correspondence or telephone contact with the Board.

Yours faithfully,

  
\_\_\_\_\_  
Eimear Reilly  
Executive Officer  
Direct Line: 01-8737184

HA02A

<b>Teil</b>	<b>Tel</b>	(01) 858 8100
<b>Glaio Áitiúil</b>	<b>LoCall</b>	1800 275 175
<b>Facs</b>	<b>Fax</b>	(01) 872 2684
<b>Láithreán Gréasáin</b>	<b>Website</b>	<a href="http://www.pleanala.ie">www.pleanala.ie</a>
<b>Ríomhphost</b>	<b>Email</b>	<a href="mailto:bord@pleanala.ie">bord@pleanala.ie</a>

64 Sráid Maoilbhríde	64 Marlborough Street
Baile Átha Cliath 1	Dublin 1
D01 V902	D01 V902

**Capital Glass Company Limited**

**61a/62 Lower Clanbrassil Street**

**Dublin 8 – DO8 X9E4**

**Phone: 01 4532631**

**Email: [sales@capitalglass.ie](mailto:sales@capitalglass.ie)**

**AN BORD PLEANÁLA**

**02 NOV 2023**

LTR DATED \_\_\_\_\_ FROM \_\_\_\_\_

LDG- \_\_\_\_\_

ABP- 317660-23

2<sup>nd</sup> November 2023

**Re: ABP-317 660-23 Case Number - Strategic Infrastructure Development Observation Application for A Proposed Bus Corridor – Bus Connects from Kimmage to City Centre**

To whom it may concern

We at Capital Glass are in deep shock and very upset at the proposal for putting in a 24-hour bus corridor at Lower Clanbrassil Street Dublin 8. We cannot believe that the local business community were not informed or included in discussions. We feel very strongly that we should have been consulted and communicated with from the onset.

We have operated our family business from these premises 61A & 62 Lower Clanbrassil Street since 1983 (some 40 years) The nature of our business is GLASS. By its nature is very breakable and dangerous to all. We load and unload glass to our vans daily, to conduct services to all the local communities, domestic & commercial, surrounding areas and the city centre.

We have conducted an emergency glazing business since we began in 1981. To facilitate this, we need to be able to access our glass vans regularly throughout the working day. Approximately, twice monthly an articulated truck with crane attached delivers large cases of glass to our premises. Smaller trucks also deliver glass daily during our working week. We supply many small builders with glass throughout each day. They need to be able to park their vans for easy access to load glass, as carrying it long distance is not an option. The safety concerns are insurmountable and could leave to serious accidents without a facility to load and unload glass.

We have spent many years trying to find a source to recycle our broken glass. Eventually we found a company to facilitate this. Now we get weekly collections by large trucks. We also apply and purchase a skip permit on a monthly basis to facilitate the removal of rubbish and broken glass etc, accumulated through our service of business.

As previous mentioned we are trading from these premises the last 40 years. We are part of the community at the Leonards Corner end of Lower Clanbrassil Street. We pride ourselves in servicing the community in many ways, including helping our neighbours. We are a community-based shop and daily people come into Capital Glass to ask us where to get something or other and we provide the answers. We have helped all the business around that have moved into the area in recent years with our knowledge. We provide lots of information.

Moving premises is not an option, as we have spent the last 40 years establishing our business. Our passing trade is a strategic part of our business and makes up to fifty per cent of our turnover. The people who use our in-house services include local communities, householders from everywhere and many students from NCAD, and Griffith College. For years now we have assisted Junior and Leaving Cert students helping them with their projects.

Our service business provides jobs for our family and staff, including young men and women with new house purchases and young families.

Progress in any form is wonderful. We do support it, but we will not survive at Capital Glass Co Ltd if a bus only corridor is put outside our premises. In fact, it could put us out of business. A survival suggestion for us could be an unrestricted loading bay.

We would appreciate it greatly if someone could contact us.

Yours sincerely

*Therese Dowling*  
**Managing Director**